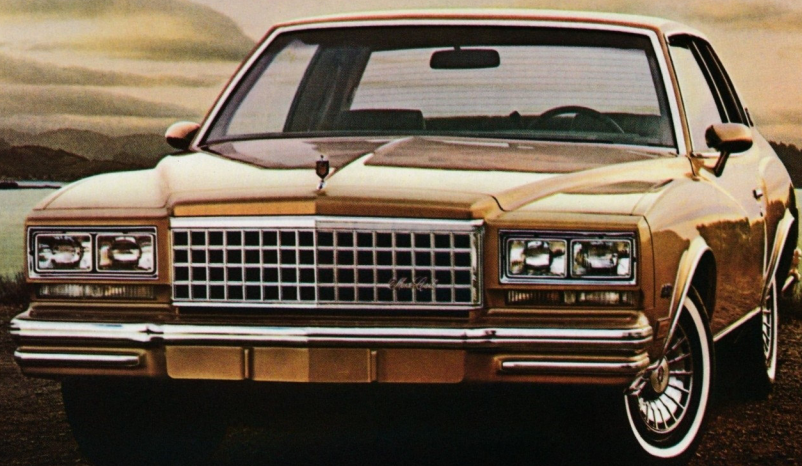


1980 MONTE CARLO

Chevrolet



THE 1980 CHEVROLET MONTE CARLO. ONE BEAUTIFUL CAR. AND UNDERNEATH IT, AN OTHER BEAUTIFUL CAR.

No other car looks quite like the Chevrolet Monte Carlo.

For 1980 that distinction continues. In the unmistakable mark of Monte Carlo's sculptured, flowing fender line. In the subtle way its curves capture and bend the light.

Up front, Monte Carlo's new grille is bold and impressive for 1980. The dual rectangular headlights are new.

If you're looking for an automobile that sets you apart simply by the proud way it looks, look no further.

But if you're also interested in a car of remarkable substance, read on.

Almost two cars in one.

Strength and dependability are integral elements of the new Monte Carlo, designed through the most advanced computer technology ever brought to bear in a Monte Carlo.

Monte Carlo rests on a heavily ribbed and formed underbody. It has a strong Body by Fisher. And its doors, roof, hood and deck lid are double-panel construction.

Inside each fender is an extra fender for extra protection against corrosion. The entire underbody is undercoated; rust-resistant primers extensively coat the body.

The 1980 Monte Carlo is a beautiful automobile.

And built to stay that way.

Take your ears for a test drive.

The sense of quiet in a Monte Carlo is there by engineering, not accident.

It begins with a full-perimeter frame, exclusive to domestic

mid-sized General Motors cars. We "tuned" Monte Carlo's full-perimeter frame with the aid of computers, placing 14 special rubber-cushioned mountings at critical points to help isolate you from road noise and vibration.

A padded acoustical ceiling helps to

soak up sound over your head, one-piece cut-pile carpeting helps muffle it under your feet. Layers of sound-deadening materials abound throughout the car.

Remind yourself it's a Chevrolet.

A car of reassuring affordability, quality engineered and designed for value.

And keep reading.

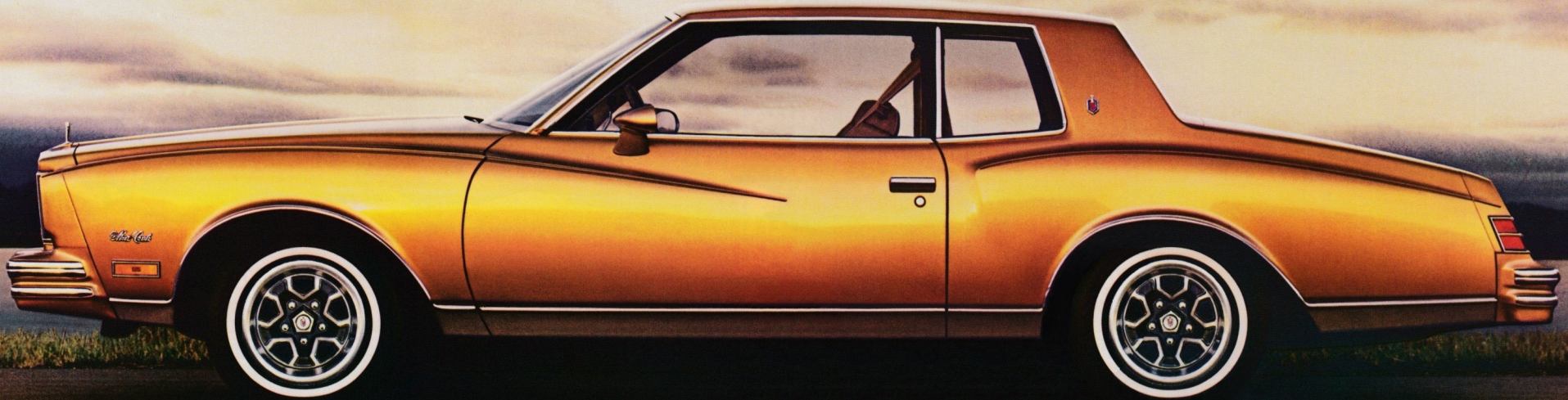
Because all of Monte Carlo's strength, comfort, quietness and value for 1980 come to you



in a trim, aerodynamically designed, modern, manageable mid-size car.

A delight to drive. Which opens up another beautiful point about the 1980 Chevrolet Monte Carlo.

As you'll see when you turn the page.



Monte Carlo Coupe shown in light camel metallic with available Value Appearance Group and white-stripe tires.

On cover: Monte Carlo Coupe shown in light camel metallic with available Sport mirrors, white-stripe tires, electric rear window defogger and other available options.

A WORD ABOUT THIS CATALOG: We have tried to make this catalog as comprehensive and factual as possible. And we hope you find it helpful. However, since the time of printing, some of the information you'll find here may have been updated. Also, some of the equipment shown or described throughout this catalog is available at extra cost. Your dealer has details and, before ordering, you should ask him to bring you up to date. The right is reserved to make changes at any time, without notice, in prices, colors, materials, equipment, specifications and models and to discontinue models. Check with your Chevrolet dealer for complete information.

WE MADE IT BEAUTIFUL. WE DIDN'T THINK YOU'D MIND IF WE ALSO MADE IT ROOMY AND COMFORTABLE.

Some people believe "personal car" and "room" a contradiction in terms.

They aren't in the 1980 Chevrolet Monte Carlo. There's some 42 inches of leg room in the front seat, more than 36 in the rear. There's over 50 inches of shoulder and hip room.

Yet, as befits a car of Monte Carlo's sporting qualities, all

driving controls come easily to hand. As an added touch of convenience, all sound and climate control systems are mounted on a separate, centrally located module within easy reach of both driver and front-seat passenger.

And inspect the trunk. You'll find the room devoted to your luggage in the new



Monte Carlo as pleasant a surprise as the room devoted to your legs, arms, hips and head.

Our comfortable seats.

They're full foam, designed to compensate for your body's natural contours. Sit back and relax.



When you've nothing but hours of driving ahead of you, you'll be glad you've got a new Chevrolet Monte Carlo under you.

Our comfortable coils.

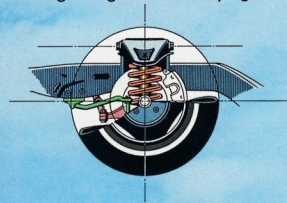
We give you four thick coil springs computer-selected for your new Monte Carlo's particular weight and combination of equipment.

Which help account for

Monte Carlo's satisfyingly smooth ride.

What accounts for the sporting way it takes you down the road is a story in itself.

Beginning on the next page.



Monte Carlo interior. Roomy, sumptuous comfort.

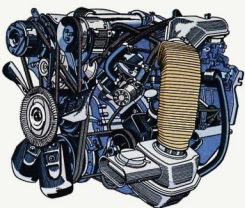
FOR 1980, MONTE CARLO PERFORMS BECAUSE OF WHAT'S UNDER THE HOOD. AND UNDER THE CAR.



If you prize the delights of driving, you've turned to your page. And prepare to be excited. We've made the thrill of getting from one point to another in a Chevrolet Monte Carlo even more fun for 1980.

Greater power output. There's a new standard engine under Monte Carlo's hood. A 3.8 Liter (229 Cu. In.) V6 with 29 more cubic inches, 20% more power output than last year. (Not available in California. A 3.8 Liter [231 Cu. In.] V6 is available in California; power output is lower.) Plus standard automatic transmission, power steering and power brakes. Plus available V8 power. But make it a point to test drive the new V6. We think you'll be impressed.

The availability of turbocharging. For 1980, we put two great examples of contemporary engineering technology together. The turbocharged V6 engine. And the 1980 Monte Carlo. Press on the accelerator and the turbocharger begins extracting extra power from the engine. For merging, passing, hill climbing. Up to 32% more horsepower, is available on demand. Lift your foot and the turbocharger slows down. So that when you're not merging, passing or climbing, you're enjoying the advantages of a normal air/fuel mixture. Kind of like having your cake and eating it too, automotively speaking. Oh, yes. When you order the available turbocharged engine, you also get a distinctive hood and turbo identification. But you won't need them to remind you of what's under the hood.



Turbocharged 3.8 Liter V6 engine.



Available cloth bucket seats shown in claret with available console, AM/FM radio, Sport mirrors, power windows, air conditioning and power door locks.

After you look Monte Carlo over, look it under. You'll see something you won't see on most other cars. Stabilizer bars front and rear. All part of a highly tuned sports

suspension standard on Monte Carlo. The bottom-line benefit is a fine feel of the road, and a nimble agility in and out of traffic and around corners.

Even the tires are special. Special, extra-wide P205/70R-14 steel-belted radials. For a little wider print, for impressive traction. All

standard on the 1980 Monte Carlo. Which should make what you're about to see in the rest of this catalog look even better to you.



Monte Carlo Coupe shown in claret with available turbocharged V6, tinted glass, electric rear window defogger, Sport mirrors, bright body sill moldings, Rally wheels and white-stripe tires.



Monte Carlo Landau shown in light blue metallic with available Landau Value Appearance Group, electric rear window defogger and white-stripe tires.

MONTE CARLO

Reflect your own good taste.

Monte Carlo is distinctively beautiful. Crisp. Clean. Sculptured. With an identity all its own. And to this very personal car, you can add your own personal touch with Monte Carlo available features.

Monte Carlo Landau.

Monte Carlo Landau has a sophisticated formal roof line crowned by padded Elk-grain vinyl that reaches over the entire front portion of the roof. Special Landau identification, exclusive-design wheel covers, bright halo roof molding and black-accented rocker panels are among Landau's special features. Monte Carlo Landau illustrated above with Landau Value Appearance Group. Includes side window sill molding, bright body sill

moldings, wire wheel covers, body-color dual Sport mirrors and color-keyed pin striping.

For people who enjoy a fine automobile.

Make your selection. Then settle back and enjoy the comfort of Monte Carlo . . . the pleasure of driving Monte Carlo . . . the pride of owning Monte Carlo.



Power Sky Roof.

Perhaps you like your open sky at the touch of a button. Monte Carlo's available Power Sky Roof slides open to let in the sun, the moon and the stars. (The Power Sky Roof slightly reduces head room.)



Custom Two-Tone styling.

Or dress up your Monte Carlo with Custom Two-Tone accent paint, available in a selection of seven beautiful color combinations.

Removable glass roof panels.

You can enjoy the fun of a convertible in your Monte Carlo equipped with available removable tinted glass roof panels. (Not available on Landau Coupe.) Just unlatch the lift-off panels and store them in the trunk.

Monte Carlo Coupe shown in available Custom Two-Tone black and light camel metallic with available Special Custom interior, tinted glass, 55/45 split seat, Sport mirrors, side window sill moldings, bright body sill moldings, wire wheel covers, white-stripe tires and removable glass roof panels.

INTERIOR COLORS

		BLACK	BLUE	CAMEL	CLARET	GREEN	OYSTER	OYSTER/CAMEL
STANDARD BENCH SEAT	Cloth (Std.)	•	•	•	•			
	Vinyl (Avail.)			•	•	•	•	
AVAILABLE BUCKET SEATS	Cloth	•	•	•	•			
	Vinyl		•	•	•	•	•	
AVAILABLE SPECIAL CUSTOM INTERIOR WITH 55/45 SPLIT BENCH SEAT	Cloth		•	•	•	•	•	
	Vinyl							•

EXTERIOR COLORS

		BLACK	BLUE	CAMEL	CLARET	GREEN	OYSTER	OYSTER/CAMEL
	Beige	•	•*	•	•	•*		
	Black	•	•	•	•	•	•	•
	Blue, Dark (Metallic)	•	•	•			•	•*
	Blue, Light (Metallic)	•	•				•	
	Camel, Light (Metallic)	•		•				
	Camel, Medium (Metallic)	•		•			•*	•*
	Cinnabar	•		•*			•	•*
	Claret (Metallic)	•			•		•	
	Claret, Dark (Metallic)	•		•	•		•	•
	Gray	•	•	•	•		•	•
	Green, Dark (Metallic)	•		•		•	•	•
	Silver	•	•*		•		•	•*
	White	•	•	•	•	•	•	•
	Yellow	•		•*			•*	

*Not available on Landau.

CUSTOM TWO-TONE COLORS AVAILABLE

Light Camel Metallic	Light Blue Metallic	Black	Dark Claret Metallic	Dark Claret Metallic	Black	Gray
						
Beige	Dark Blue Metallic	Light Camel Metallic	Claret Metallic	Gray	Silver	White
						

Vinyl roof colors available for full roof and Landau roof covers
Black, Dark Claret,* Dark Green,* Gray, Light Blue,* Light Camel,* White.

Check your dealer for complete information on vinyl roof and Custom Two-Tone availability.

*Metallic.



Available Special Custom interior with 55/45 split seat and center armrest. Shown in camel cloth. Available Sport mirrors and other options also shown.



Available Special Custom vinyl interior shown in oyster/camel with dark brown and cream accent colors on seats and door panels.



Monte Carlo standard cloth interior shown in claret. New knit corduroy cloth and carpeting are color coordinated.

MONTE CARLO INTERIORS

Monte Carlo's special appeal takes on added dimension when you see its inviting interior. Beautifully tailored appointments and rich cloth or available vinyl upholstery surround you.

We suggest you pay particular attention to the clean and functional instrument panel. It's located forward to provide front-seat knee and leg room. Easy-to-read instrumentation tells you what's going on. All controls are within easy reach. And in the center, convenient to both driver and front seat passenger, is a control panel for heating/ventilation and available air conditioning and sound systems.

For 1980 we've added styling refinements that include vinyl trim inserts with the look of Carpathian Elm burl wood-grain on the instrument panel and center control panel. There's new trim design for seats and door panels. Other luxury details include full foam cushioned seats; cut-pile, one-piece carpeting front to rear; color-keyed carpeting across the lower portion of each door; color-coordinated seat and shoulder belts; a one-piece-cloth, thickly padded ceiling; door pull straps, and more.

You can personalize Monte Carlo's interior from your choice of decor and color combinations shown in the chart.

Standard Features

1. Automatic transmission. Moves you smoothly through three forward speed ranges.

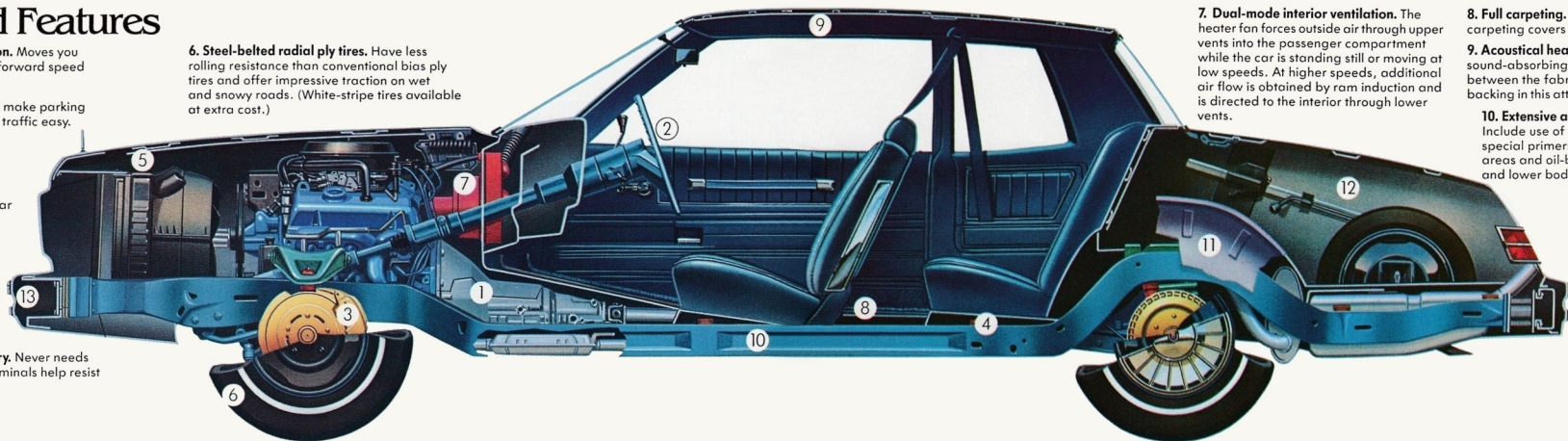
2. Power steering. Helps make parking and maneuvering in city traffic easy.

3. Power front disc/rear drum brake system. A self-adjusting system. Fade-resistant front disc brakes have audible wear sensors to let you know when to replace pads.

4. Cushioned body mounting system. Helps isolate passenger area from road noise and vibration.

5. Delco Freedom battery. Never needs refilling. Sealed side terminals help resist corrosion.

6. Steel-belted radial ply tires. Have less rolling resistance than conventional bias ply tires and offer impressive traction on wet and snowy roads. (White-stripe tires available at extra cost.)



7. Dual-mode interior ventilation. The heater fan forces outside air through upper vents into the passenger compartment while the car is standing still or moving at low speeds. At higher speeds, additional air flow is obtained by ram induction and is directed to the interior through lower vents.

8. Full carpeting. One-piece wall-to-wall carpeting covers even under the front seats.

9. Acoustical headlining. Polyfoam sound-absorbing material is sandwiched between the fabric and the hardboard backing in this attractive one-piece ceiling.

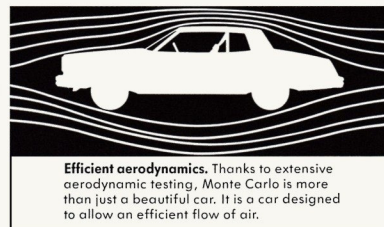
10. Extensive anti-corrosion treatments. Include use of zinc-rich precoat metal, special primers and sealers in strategic areas and oil-base coatings on the frame and lower body.

11. Front and rear inner fenders. Shield inner surfaces from stones, slush and road salt for added corrosion resistance.

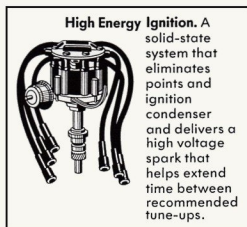
12. Spacious trunk.

16.1 cubic feet of usable luggage capacity to accommodate a wide variety of items.

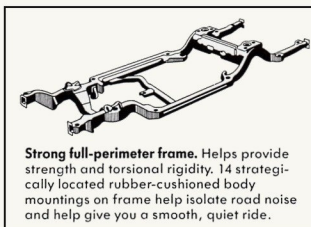
13. Resilient body-colored front and rear bumpers. Includes bright-accented impact strips.



Efficient aerodynamics. Thanks to extensive aerodynamic testing, Monte Carlo is more than just a beautiful car. It is a car designed to allow an efficient flow of air.



High Energy Ignition. A solid-state system that eliminates points and ignition condenser and delivers a high voltage spark that helps extend time between recommended tune-ups.



Strong full-perimeter frame. Helps provide strength and torsional rigidity. 14 strategically located rubber-cushioned body mountings on frame help isolate road noise and help give you a smooth, quiet ride.



Compact spare tire. Stores vertically out of the way to provide added space for luggage. Lighter in weight than conventional tire, and easier to handle.



Full Coil suspension system. Four thick coil springs are computer-selected for your new Monte Carlo's particular weight and combination of equipment. Includes front and rear stabilizer bars.

MORE STANDARDS

Delcotron generator with built-in solid-state regulator • Visible wear indicators on front suspension lower control arm ball joints • Early fuel evaporation system on all engines • Coolant recovery system • Forward mounted recirculating ball steering gear and linkage • Concealed dual-speed electric windshield wipers • Molded full foam seat construction • Color-

keyed seat and shoulder belts • Electric clock • Glove compartment lock and light • Dual-unit rectangular headlights • Column-mounted lever for turn signal and headlight dimmer • Ashtray light • Acrylic finish • Dual horns • Bright wheel opening moldings • Bright roof drip moldings • Full wheelcovers • Body by Fisher.

A WORD ABOUT ENGINES

Chevrolets are equipped with GM-built engines produced by various divisions. Please refer to the Monte Carlo Power Teams Chart or see your dealer for details.

GOOD NEWS ABOUT ENGINES

Monte Carlo introduces two new powerplants for 1980. A 3.8 Liter (229 Cu. In.) V6 with larger displacement and more power than last year's standard V6. And the exciting turbocharged 3.8 Liter (231 Cu. In.) V6. If you want even more power and performance under the hood, choose an available V8.

3.8 LITER (229 CU. IN.) 2-BBL. V6
Monte Carlo's new standard engine for 1980, designed and built to deliver the kind of performance you need for today's driving. This smooth-firing V6 has a cast-iron engine block and crankshaft plus Dualjet aluminum carburetor. The compression ratio, as well as the dimensions of cylinder diameters, inlet

valves and exhaust valves, is identical to that of the 305-cu.-in. V8 engine. The cylinders are banked three to a side which makes for a short, light, compact engine. This new V6 delivers 20 percent more power than last year's standard V6. (Not available in California.)

A 3.8 Liter (231 Cu. In.) V6 is standard in California only.

TURBOCHARGED 3.8 LITER (231 CU. IN.) 4-BBL. V6

New for 1980. Through the use of the turbocharger, this available V6 delivers added power without increasing engine displacement. For example, in a situation requiring added acceleration — like passing — a press on the accelerator causes the turbocharger to speed up. Using exhaust gases as a power source, the turbocharger turns a compressor that forces a pressurized fuel and air charge into the engine's combustion chamber. This develops and extracts increased horsepower from the engine.

4.4 LITER (267 CU. IN.) 2-BBL. V8 ENGINE

This available V8 includes short-stroke valve-in-head design and Dualjet carburetor which help provide good engine performance at all speed ranges. It also features a cast-iron cylinder block with full jacket cylinder cooling, a precision-balanced, cast nodular iron crankshaft, hydraulic valve lifters and exhaust valve rotators. (Not available in California.)

5.0 LITER (305 CU. IN.) 4-BBL. V8 ENGINE

This available engine features short-stroke valve-in-head design and is equipped with a 4-barrel carburetor for added power output, which helps provide good engine performance at all speed ranges. There are also full jacket cylinder cooling, a precision-balanced crankshaft and hydraulic valve lifters. Included is an Exhaust Gas Recirculation system for emission control.

MONTE CARLO POWER TEAMS

Engine	Ordering Code	Displacement (cubic inches)	Engine Availability	Automatic Transmission
ALL STATES EXCEPT CALIFORNIA				
3.8 Liter 2-Bbl. V6 (A)	LC3	229	Std.	Std.
3.8 Liter 4-Bbl. Turbocharged V6 (C)	LC8	231	EC	Std.
4.4 Liter 2-Bbl. V8 (B)	L39	267	EC	Std.
5.0 Liter 4-Bbl. V8 (B)	LG4	305	EC	Std.
CALIFORNIA ONLY (with California Emission Requirements)				
3.8 Liter 2-Bbl. V6 (C)	LD5	231	Std.	Std.
3.8 Liter 4-Bbl. Turbocharged V6 (C)	LC8	231	EC	Std.
5.0 Liter 4-Bbl. V8 (B)	LG4	305	EC	Std.

Std. — Standard. EC — Available at extra cost.

(A) Produced by GM — CHEVROLET MOTOR DIVISION.

(B) Produced by GM — CHEVROLET MOTOR DIVISION and GM OF CANADA.

(C) Produced by GM — BUICK MOTOR DIVISION.

RECOMMENDED SERVICE INTERVALS

(under normal operating conditions)

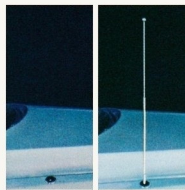
Engine Oil	12 months or 7,500 miles	Spark Plugs	Up to 30,000 miles*
Oil Filter	12 months or 7,500 miles; every 15,000 miles thereafter	Chassis Lubrication . .	12 months or 7,500 miles
		Automatic Transmission Fluid Change . .	Every 100,000 miles

*22,500 miles with 4.4. Liter V8.

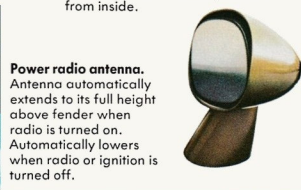
DIMENSIONS (in inches)

EXTERIOR	Monte Carlo
Wheelbase	108.1
Length (overall)	200.4
Width (overall)	71.5
Height (loaded)	53.9
Tread — Front	58.5
Tread — Rear	57.8
Fuel Tank Capacity (gallons)	18.1
INTERIOR	
Head Room — Front	37.6
Head Room — Rear	37.8
Leg Room — Front	42.8
Leg Room — Rear	36.3
Hip Room — Front	51.6
Hip Room — Rear	54.9
Shoulder Room — Front	56.0
Shoulder Room — Rear	55.9
Usable Luggage Capacity (cu. ft.)	16.1

AVAILABLE OPTIONS



Electric rear window defogger.
Electric grid-type helps keep rear window free of mist and ice.



Power radio antenna.
Antenna automatically extends to its full height above fender when radio is turned on. Automatically lowers when radio or ignition is turned off.

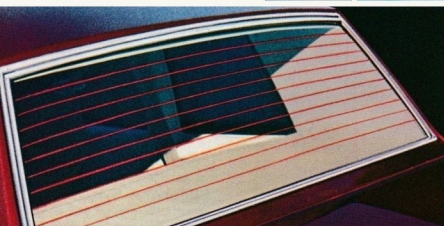


Power seat. Electric 6-way control of entire front seat, or driver's seat only if ordered with 55/45 seats.



Power door lock system.
Controls on each door allow driver or passenger to lock or unlock both doors instantly.

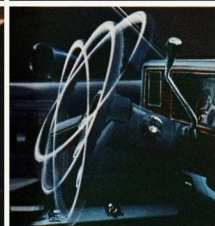
Power door lock system.
Controls on each door allow driver or passenger to lock or unlock both doors instantly.



Power windows. Raise or lower windows at a touch of a button.



Hi-Intensity, Hi-Beam headlights.
Noticeably increased nighttime visibility without an increase in electrical input.



Comfortilt steering wheel.
Adjusts to six different positions for most comfortable driving angle.



Automatic speed control.
Automatically maintains a constant speed for added driving ease during long stretches.



Power trunk opener. Touch the release button located inside the glove box and the trunk lid unlatches.



Rally wheels. Bright argent/medium gray finish with bright lug nuts. Not available on Landau.



Wire wheel covers. Bright chrome finish with the appearance of wire wheels.



Console. Available with bucket seats only.

Air conditioning. Cooling, heating and defogging in one easily operated unit.



Gage Package with tachometer.
Includes voltmeter, temperature and oil pressure gages. Other available options also shown.

Sound systems. All made to General Motors quality standards. Select from: AM/FM stereo radio with stereo cassette tape; AM/FM stereo/Citizens Band radio with power antenna; AM/FM/Citizens Band radio with power antenna. Also: AM radio, AM/FM radio, AM/FM stereo radio; eight-track stereo tape available with AM or AM/FM stereo radios.

SAFETY FEATURES

Occupant Protection

Seat belts with push-button buckles for all passenger positions • Two front combination seat and inertia reel shoulder belts for driver (with reminder light and buzzer) and right front passenger • Energy-absorbing steering column • Passenger guard door locks • Safety door latches and stamped steel hinges • Folding seat back latches • Energy-absorbing padded instrument panel and front seat back tops • Laminated windshield • Safety armrests.

Accident Avoidance

Side marker lights and reflectors • Parking lamps that illuminate with headlights • Four-way hazard warning flasher • Backup lights • Lane change feature in direction signal control • Windshield defrosters, washer and dual-speed wipers • Wide-view inside mirror (vinyl-edged, shatter-resistant glass and deflecting support) • Outside rearview mirror • Dual master cylinder brake system with warning light • Starter safety switch • Dual-action safety hood latch.

Anti-Theft

Anti-theft ignition key reminder buzzer • Anti-theft steering column lock.

A word about assembly, components and optional equipment in these Chevrolets.

The Chevrolets described in this catalog are assembled at facilities of General Motors Corporation operated by the GM Assembly Division or GM of Canada. These vehicles incorporate thousands of different components produced by various divisions of General Motors and by various suppliers to General Motors. From time to time during the manufacturing process, it may be necessary, in order to meet public demand for particular vehicles or equipment, or to meet federally mandated emissions, safety and fuel economy requirements, or for other reasons, to produce Chevrolet products with different components or differently sourced components than initially scheduled. All such components have been approved for use in Chevrolet products and will provide the quality performance associated with the Chevrolet name.

With respect to extra cost optional equipment, make certain you specify the type of equipment you desire on your vehicle when ordering it from your dealer. Some options may be unavailable when your car is built. Your dealer receives advice regarding current availability of options. You may ask the dealer for this information. GM also requests the dealer to advise you if an option you ordered is unavailable. We suggest you verify that your car includes the optional equipment you ordered or, if there are changes, that they are acceptable to you.



The GM Continuous Protection Plan. Offers service protection in addition to that provided by GM's new vehicle limited warranty. Ask your dealer about it. Coverage available only in the U.S.A. and Canada for the 1980 model year.

REASONS TO BUY MONTE CARLO

- REFINED, DISTINCTIVE STYLING.
- RICH INTERIOR COMFORT AND CONVENIENCE.
- SELECTION OF V6 OR AVAILABLE V8 POWER.
- SMOOTH, QUIET RIDE WITH A RESPONSIVE, ROAD-TUNED SUSPENSION SYSTEM.
- QUALITY ENGINEERED AND DESIGNED FOR VALUE.

BUILD YOUR OWN MONTE CARLO.

(See your dealer for current ordering information.)

MODELS

- ☐ Monte Carlo Coupe ☐ Monte Carlo Landau Coupe

COLORS (See chart on page 10 for color combinations.)

Exterior color _____ Second color (if Custom Two-Tone) _____ Interior color _____
Vinyl roof color _____ Upholstery (cloth or vinyl) _____

ENGINES (See chart on page 13 for availability.)

- ☐ 3.8 Liter (229 Cu. In.) 2-Bbl. V6 — Std.* ☐ 4.4 Liter (267 Cu. In.) 2-Bbl. V8 — Avail.*
☐ 3.8 Liter (231 Cu. In.) 2-Bbl. V6 — Avail.** ☐ 5.0 Liter (305 Cu. In.) 4-Bbl. V8 — Avail.
☐ 3.8 Liter (231 Cu. In.) 4-Bbl. Turbocharged V6 — Avail.

TRANSMISSION (Automatic transmission is standard with all models and engines.)

AVAILABLE OPTIONS

- ☐ Air conditioning.
☐ Power windows.
☐ Hi-Intensity, Hi-Beam headlights.
☐ Vinyl roof.†
☐ Comfortilt steering wheel.
☐ Console.
☐ Automatic speed control.
☐ Power door lock system.
☐ Electric rear window defogger.
☐ Tinted glass.
☐ Removable glass roof panels (not available on Landau or with full vinyl roof).
☐ Auxiliary lighting.
☐ Deluxe luggage compartment trim.
☐ Gage Package with tachometer (includes voltmeter, temperature and oil pressure gages).
☐ Gage Package (includes temperature, voltmeter and oil pressure gages).
☐ Intermittent windshield wiper system.
☐ Color-keyed floor mats, front and rear.
☐ Body side and rear pin striping.
☐ Monte Carlo Landau Value Appearance Group (includes side window sill moldings, wire wheel covers, bright body sill moldings, body-color dual Sport mirrors and color-keyed pin striping).
☐ Monte Carlo Value Appearance Group (includes side window sill moldings, color-keyed pin striping,

Rally Wheels, bright body sill moldings and body-color dual Sport mirrors.

MOLDINGS

- ☐ Deluxe body side moldings.
☐ Door edge guards.
☐ Side window sill moldings.
☐ Bright body sill moldings.

SOUND EQUIPMENT

- ☐ AM radio.
☐ AM/FM radio.
☐ AM/FM/Citizens Band radio with power antenna.
☐ AM/FM stereo/Citizens Band radio with power antenna.
☐ AM/FM stereo radio.
☐ AM radio with 8-track stereo tape.
☐ AM/FM stereo radio with stereo cassette tape.
☐ AM/FM stereo radio with 8-track stereo tape.
☐ Rear seat speaker.
☐ Dual front and dual rear speakers.
☐ Power antenna.

SEATING

- ☐ Special Custom interior with 55/45 seat.
☐ Six-way power seat (not available with bucket seats).
☐ Bucket seats.

WHEEL AND WHEEL COVERS

- ☐ Rally wheels (not available on Landau).
☐ Wire wheel covers.

SPECIAL SUSPENSION

- ☐ Heavy-duty front and rear suspension.

TIRES

- ☐ P205/70R-14 steel-belted radial ply white-stripe tires.

MIRRORS

- ☐ Remote control outside rearview mirror, LH.
☐ Sport mirrors, LH remote control and RH manual.
☐ Twin remote control Sport mirrors.
☐ RH visor mirror.†
☐ Illuminated RH visor mirror.


OTHER AVAILABLE OPTIONS

- ☐ Heavy-duty cooling.
☐ Performance axle ratio.
☐ Limited slip differential.
☐ Heavy-duty battery.
☐ Litter container.
☐ 70-amp Delcotron generator.
☐ Power trunk opener.
☐ Power Sky Roof.
☐ GM Continuous Protection Plan.

*Not available in California

**Available in California only

†Standard on Monte Carlo Landau

 Chevrolet

